



GROW
— YOUR CAREER —
IN THE KIWIFRUIT INDUSTRY

GOLDEN OPPORTUNITIES

AWAIT



**OPEN THIS BOOKLET TO UNLOCK YOUR
KIWIFRUIT CAREER PATHWAY**







FULL TIME EMPLOYMENT

Roll up your sleeves and hit the ground running by entering the industry directly to get valuable work experience. Once you are in the industry, many employers offer study opportunities so that you can advance on the job.



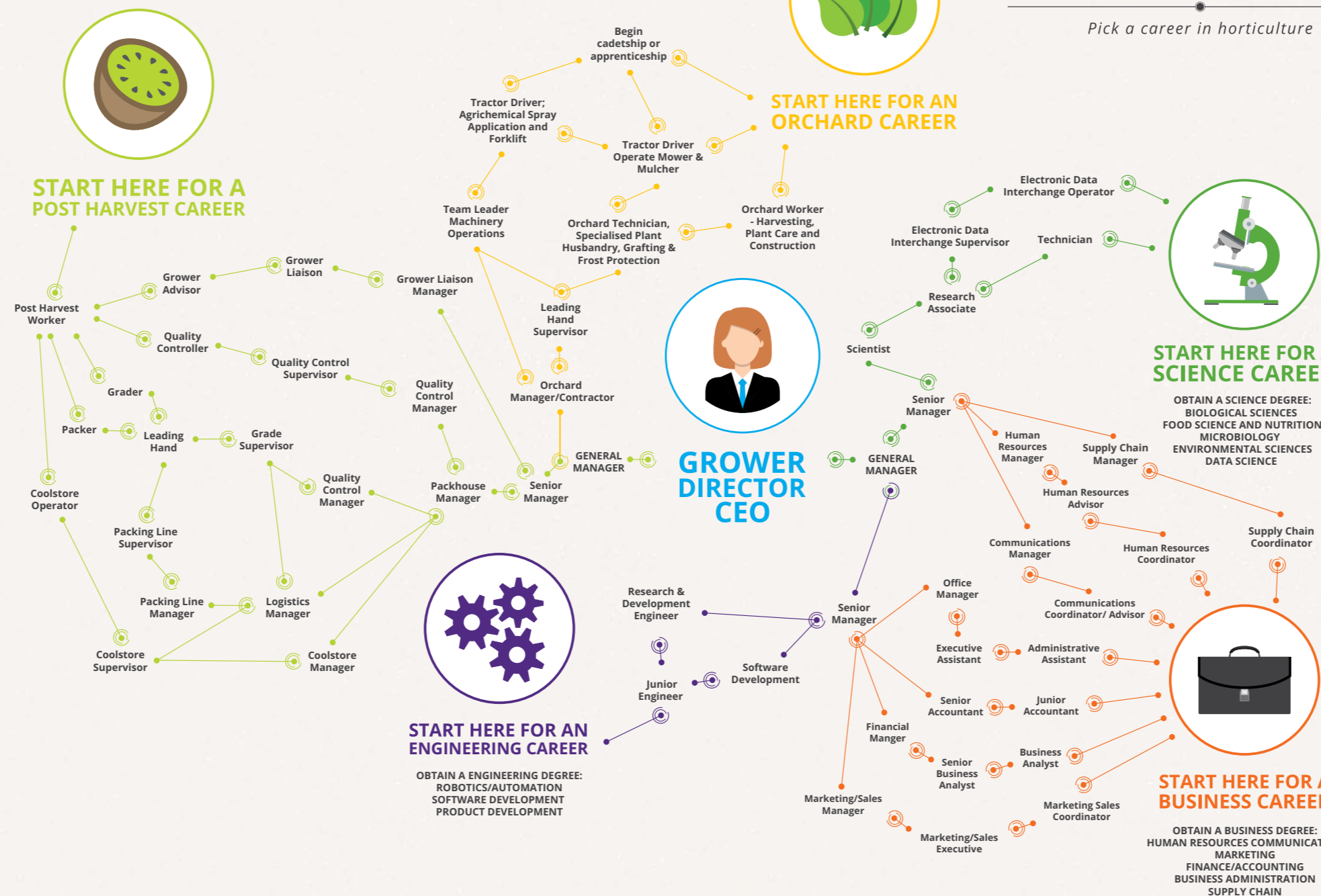
PART TIME STUDY/EMPLOYMENT

Earn while you learn by working within a kiwifruit orchard, packhouse or kiwifruit related business. There are study options to suit everyone from Level 1 Horticulture through to apprenticeships.



FULL TIME STUDY

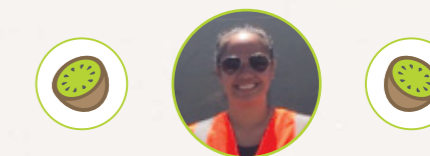
Study a range of subjects such as business, engineering, science and horticulture all of which are applicable to a career in the kiwifruit industry.



YOUR CAREER PATH IN HORTICULTURE

Pick a career in horticulture

CAREER PROFILES



WAI DE FLAVELLE

Role/Organisation: Inventory and Logistics Coordinator at EastPack
Pathway: Full Time Employment

I started out in the industry working in the packhouse at EastPack and within those five years I have worked in a range of roles including; Packer, Packhouse Team Leader, Allocations Coordinator, Field Technician, Crop Assessment Team Leader, Inventory Assistant and finally to my current role as Inventory and Logistics Coordinator. I have found that in this industry, if you are a hard worker you can progress very quickly! There are so many opportunities to learn, grow and develop a meaningful career.



CAMPBELL WOOD

Role/Organisation: Director at Pivot Horticulture
Pathway: Part Time Study/Employment

I enjoy the diversity of working with lots of people coming from a range of cultures and places around the world. The kiwifruit industry offers a huge range of professional development opportunities which have helped advance my career and I am passionate about attracting young people to the industry so that they too can experience the amazing opportunities that are available.



HIRAINA TANGIORA

Role/Organisation: External Relations Coordinator at Zespri
Pathway: Full Time Study

I love working in the Kiwifruit industry as it is full of passionate, creative and intelligent people all working collaboratively to achieve the same goal. Due to the variable nature of kiwifruit, you must constantly think on your feet and be highly adaptive to changes; however, it means no two days are the same and provides a great amount of variety and diversity. I encourage anyone looking for a fulfilling career to consider kiwifruit- there is more to the industry than meets the eye!

NEW ZEALAND GROWING REGIONS



**To find out more about careers
in kiwifruit contact NZKGI.**

W: www.nzkgi.org.nz

E: info@nzkgi.org.nz

P: 07 574 7139