

STEP 2 SIZE UP THE RISKS

⚠ Use this table to assess the risk associated with the hazard you have identified. Can the risk be removed, how likely it is to harm, what harm could potentially happen and who is the best person to manage the risk?



HOW TO USE THE MATRIX

A Risk Matrix is a tool to help quantify risks of an incident. Risks can be defined as the likelihood of an event occurring multiplied by the consequence of the event. It's subjective but it's a good way to assess the risks and make sure you are focussing on the right stuff i.e. the highest risks.

It's generally easier to start with assessing the consequence, if an incident was to occur, what would the consequence be? Could it result in a fatality or realistically would it only ever be something that required medical treatment? Then look down the likelihood column to assess the likelihood of that incident occurring, is it something that happens regularly in the industry or would it be rare. It just needs to be your best assessment of the likelihood, it can be difficult to quantify so it's only your best assessment based on your knowledge.


SIZE UP MACHINERY RISKS EXAMPLE

		POTENTIAL CONSEQUENCE			
		Minor injury/illness	Moderate injury/illness	Significant injury/illness	Fatality
LIKELIHOOD OF INCIDENT	Very likely	Moderate	High	Extreme	Extreme
	Likely	Low	Moderate	High	Extreme
	Unlikely	Very low	Low	Moderate	High
	Rare	Very low	Very low	Low	Moderate

HAZARD IDENTIFICATION	RISK ASSESSMENT				CONTROL METHOD			MONITOR THE RISK	
What is the hazard identified?	Potential injury/illness	Likelihood of incident	Potential consequence	Risk score	Eliminate or minimise?	Control put in place?	Actioned by?	Review of the controls	Actioned by?
MACHINERY									
E.g. Quad bike	Rolled vehicle, driver falls off resulting in injury	Unlikely	Fatality	High	Minimise	<ul style="list-style-type: none"> Compulsory staff training, and competency assessments undertaken Procedure in place around safe use of quad on orchard Hazardous terrain and areas where quad bike is permitted identified on orchard map PPE gear worn at all times 	PCBU's – Orchard Manager and contractor engaged	Every 6 months	Orchard Manager



STEP 2 SIZE UP THE RISKS

 Use this table to assess the risk associated with the hazard you have identified. Can the risk be removed, how likely it is to harm, what harm could potentially happen and who is the best person to manage the risk?

[illegible]

STEP 2 SIZE UP THE RISKS

⚠ Use this table to assess the risk associated with the hazard you have identified. Can the risk be removed, how likely it is to harm, what harm could potentially happen and who is the best person to manage the risk?



HOW TO USE THE MATRIX

A Risk Matrix is a tool to help quantify risks of an incident. Risks can be defined as the likelihood of an event occurring multiplied by the consequence of the event. It's subjective but it's a good way to assess the risks and make sure you are focussing on the right stuff i.e. the highest risks.

It's generally easier to start with assessing the consequence, if an incident was to occur, what would the consequence be? Could it result in a fatality or realistically would it only ever be something that required medical treatment? Then look down the likelihood column to assess the likelihood of that incident occurring, is it something that happens regularly in the industry or would it be rare. It just needs to be your best assessment of the likelihood, it can be difficult to quantify so it's only your best assessment based on your knowledge.


SIZE UP PEOPLE RISKS EXAMPLE

		POTENTIAL CONSEQUENCE			
		Minor injury/illness	Moderate injury/illness	Significant injury/illness	Fatality
LIKELIHOOD OF INCIDENT	Very likely	Moderate	High	Extreme	Extreme
	Likely	Low	Moderate	High	Extreme
	Unlikely	Very low	Low	Moderate	High
	Rare	Very low	Very low	Low	Moderate

HAZARD IDENTIFICATION	RISK ASSESSMENT				CONTROL METHOD			MONITOR THE RISK	
What is the hazard identified?	Potential injury/illness	Likelihood of incident	Potential consequence	Risk score	Eliminate or minimise?	Control put in place?	Actioned by?	Review of the controls	Actioned by?
PEOPLE									
Spray contractor and visitors on orchard at same time	Inhalation of contaminants	Very likely	Moderate injury/illness	High	Minimise	<ul style="list-style-type: none"> Induction and sign in procedures in place and mandatory for all visitors to the orchard All visitors to wear high vis vests while on orchard Traffic management on orchard "No go" areas clearly identified and communicated to all parties 	PCBU's – Orchard Manager and spray contractor	Every 3 months	Orchard Manager



STEP 2 SIZE UP THE RISKS

 Use this table to assess the risk associated with the hazard you have identified. Can the risk be removed, how likely it is to harm, what harm could potentially happen and who is the best person to manage the risk?



HAZARD IDENTIFICATION	RISK ASSESSMENT				CONTROL METHOD			MONITOR THE RISK	
What is the hazard identified?	Potential injury/illness	Likelihood of incident	Potential consequence	Risk score	Eliminate or minimise?	Control put in place?	Actioned by?	Review of the controls	Actioned by?
PEOPLE									

STEP 2 SIZE UP THE RISKS

⚠ Use this table to assess the risk associated with the hazard you have identified. Can the risk be removed, how likely it is to harm, what harm could potentially happen and who is the best person to manage the risk?



HOW TO USE THE MATRIX

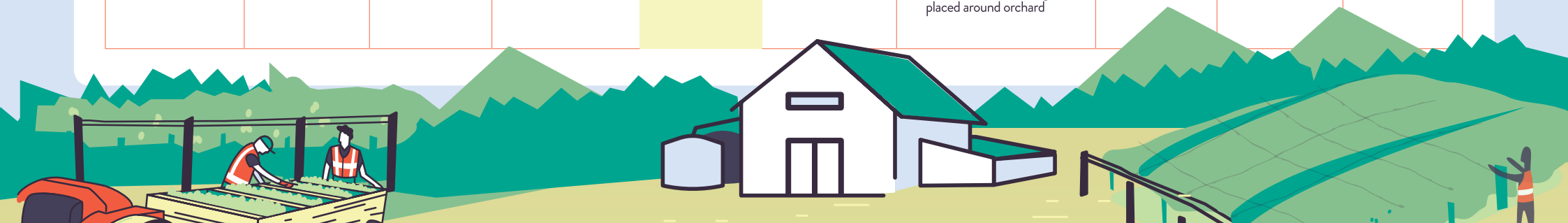
A Risk Matrix is a tool to help quantify risks of an incident. Risks can be defined as the likelihood of an event occurring multiplied by the consequence of the event. It's subjective but it's a good way to assess the risks and make sure you are focussing on the right stuff i.e. the highest risks.

It's generally easier to start with assessing the consequence, if an incident was to occur, what would the consequence be? Could it result in a fatality or realistically would it only ever be something that required medical treatment? Then look down the likelihood column to assess the likelihood of that incident occurring, is it something that happens regularly in the industry or would it be rare. It just needs to be your best assessment of the likelihood, it can be difficult to quantify so it's only your best assessment based on your knowledge.


SIZE UP PROPERTY RISKS EXAMPLE

		POTENTIAL CONSEQUENCE			
		Minor injury/illness	Moderate injury/illness	Significant injury/illness	Fatality
LIKELIHOOD OF INCIDENT	Very likely	Moderate	High	Extreme	Extreme
	Likely	Low	Moderate	High	Extreme
	Unlikely	Very low	Low	Moderate	High
	Rare	Very low	Very low	Low	Moderate

HAZARD IDENTIFICATION	RISK ASSESSMENT				CONTROL METHOD			MONITOR THE RISK	
	What is the hazard identified?	Potential injury/illness	Likelihood of incident	Potential consequence	Risk score	Eliminate or minimise?	Control put in place?	Actioned by?	Review of the controls
PROPERTY									
	Powerline running through orchard (overhead & underground)	Electrocution and/or death	Rare	Fatality	Moderate	Minimise	<ul style="list-style-type: none"> Procedure in place and staff training undertaken All powerlines identified as hazards on orchard map Underground powerlines marked with spray paint and signage "Caution overhead" signs placed around orchard 	Orchard Manager	Every 6 months
								Orchard Manager	



STEP 2 SIZE UP THE RISKS

 Use this table to assess the risk associated with the hazard you have identified. Can the risk be removed, how likely it is to harm, what harm could potentially happen and who is the best person to manage the risk?



HAZARD IDENTIFICATION	RISK ASSESSMENT				CONTROL METHOD			MONITOR THE RISK	
	Potential injury/illness	Likelihood of incident	Potential consequence	Risk score	Eliminate or minimise?	Control put in place?	Actioned by?	Review of the controls	Actioned by?
PROPERTY									